



30 Smollett Street, Bootle, Liverpool L20 4PT

£725 PCM

Two Bedroom Unfurnished Mid Terrace Property TO LET Smollett Street in Bootle, Liverpool. Offering a perfect blend of comfort and convenience, this property features two spacious reception rooms, ideal for both relaxation and entertaining guests. The two well-proportioned bedrooms provide a peaceful retreat, making it suitable for individuals or small families.


The house boasts a modern bathroom, ensuring that your daily routines are both comfortable and efficient. With double glazing throughout, you can enjoy a warm and quiet environment, shielding you from the hustle and bustle of the outside world.

As an unfurnished property, it presents a wonderful opportunity for you to personalise the space and make it truly your own. Located in a vibrant area, you will find local amenities, parks, and transport links within easy reach, making this home not only a comfortable living space but also a practical choice for modern living.

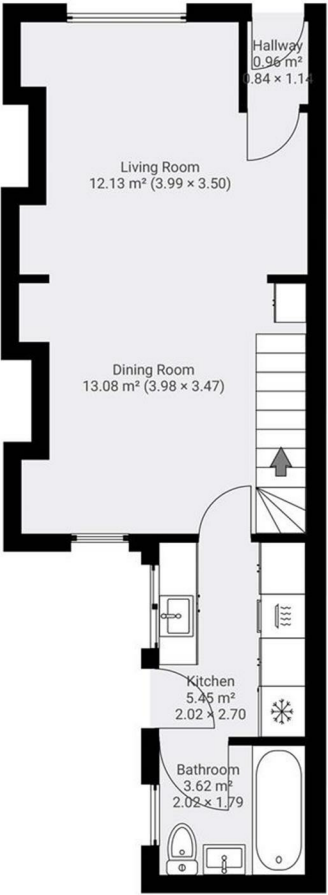
Deposit: £725
Council Tax Band: A
Minimum Term 12 months



Front Exterior
Through Lounge
Dining Room
Kitchen
Bathroom
Bedroom 1
Bedroom 2
Rear Exterior

Energy Efficiency Rating		
	Current	Potential
Very energy efficient - lower running costs		
(92 plus) A		83
(81-91) B		
(69-80) C		
(55-68) D		
(39-54) E	67	
(21-38) F		
(1-20) G		
Not energy efficient - higher running costs		
England & Wales		EU Directive 2002/91/EC 

Environmental Impact (CO ₂) Rating		
	Current	Potential
Very environmentally friendly - lower CO ₂ emissions		
(92 plus) A		
(81-91) B		
(69-80) C		
(55-68) D		
(39-54) E		
(21-38) F		
(1-20) G		
Not environmentally friendly - higher CO ₂ emissions		
England & Wales		EU Directive 2002/91/EC



Berkeley Shaw Estate Agents Limited.
Company No. 0784754

Berkeley Shaw Real Estate Limited.
Company No. 05206927

